

# Longlife

Sustainable, energy efficient and resource saving residential buildings in consideration of unified procedures and new and adapted technologies



News 3/11

## Christmas by Longlife

The last year was an important time for our project Longlife. The main outputs of the project: the design of the five national pilot projects, the development of the Prototype Catalogue, the foundation of the Longlife Performance Pass were established.

We are pleased about the fact that we all have successfully brought the project Longlife to the completion.

Now, we wish all the project partners, experts, supporters and friends a peaceful and happy Christmas time and may the New Year will be filled with new hopes, new joy and new beginnings!

Looking forward to continue the warm association we share in the coming year!



## Longlife Institute e.V.

The establishment of the Longlife Institute e.V. will continue the cooperation after conclusion of the Longlife Project. Interested companies or planners are welcome to get more information on our web page.

Be a member:

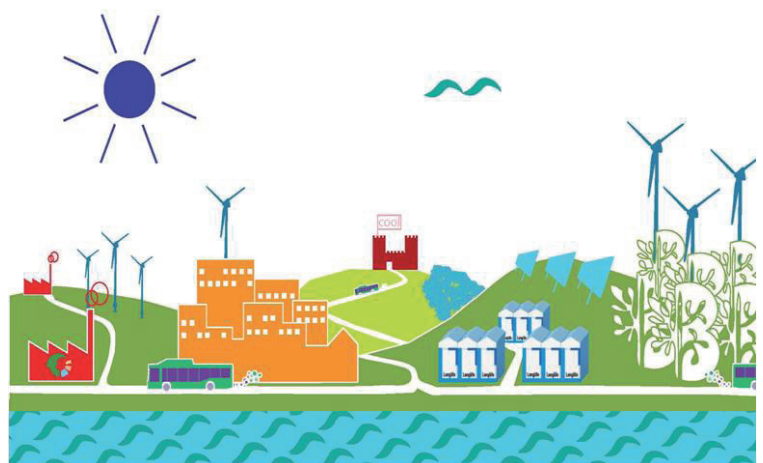
[www.longlife-institute.org](http://www.longlife-institute.org)



## Energy Cluster

Furthermore, Longlife is engaged as cluster leader in the cooperation of eight energy concerned EU projects of the Baltic Sea Region to form a cluster initiative of „Energy Efficiency and Renewable Energy Sources“: **Energy Cluster**. All project partners have common interests in sustainability and the use of renewable energy. The task of the Cluster Energy is to create synergies between the participating projects. A compendium will present the synergies in autumn 2012.

[www.energy-cluster.info](http://www.energy-cluster.info)

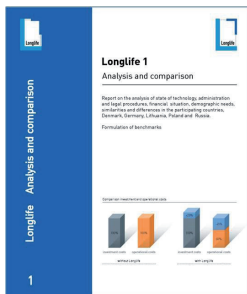


Part-financed by the European Union (European Regional Development Fund)

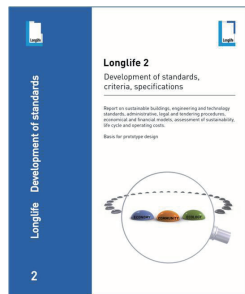




## Publications



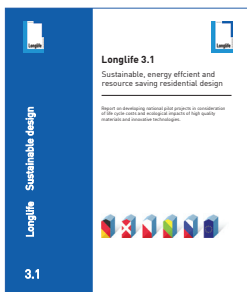
ISBN 978-3-7983-2213-4



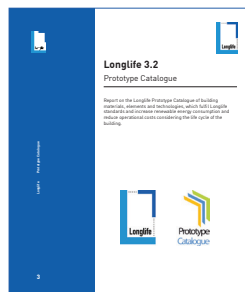
ISBN 978-3-7983-2247-9



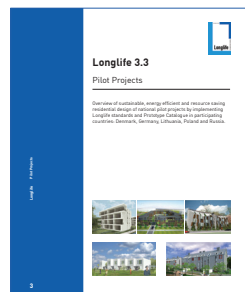
ISBN 978-3-7983-2393-3



ISBN 978-3-7983-2390-2



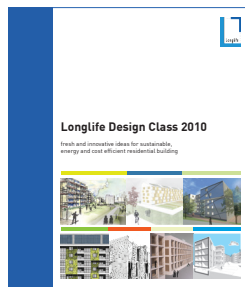
ISBN 978-3-7983-2391-9



ISBN 978-3-7983-2392-6



ISBN 978-3-7983-2394-0



ISBN 978-3-7983-2277-6



## Contacts

Prof. Dr.-Ing. Klaus Rückert  
Lead Partner, Longlife

E-mail: klaus.rueckert@tu-berlin.de

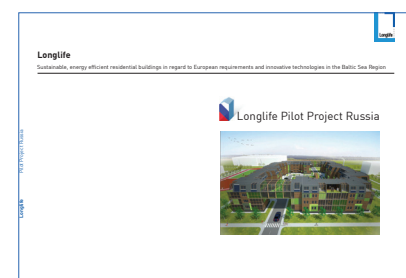
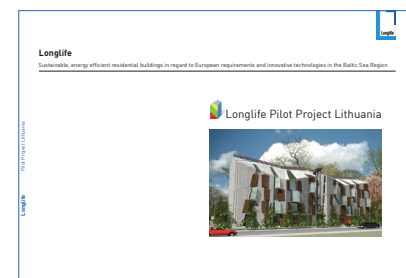
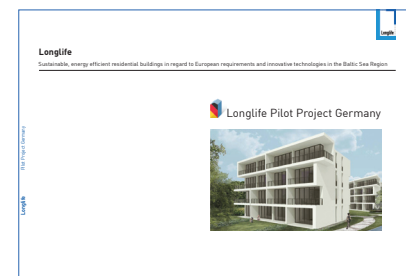
[www.longlife-world.eu](http://www.longlife-world.eu)

Dipl.-Ing. Maria-Ilona Kiefel  
Project Manager, Longlife

[www.longlife-institute.org](http://www.longlife-institute.org)

Phone: +49 1718002261  
E-mail: info@kiefelundpartner.de  
[www.kiefelundpartner.de](http://www.kiefelundpartner.de)

[www.energy-cluster.info](http://www.energy-cluster.info)



ISBN 978-3-7983-2395-7

